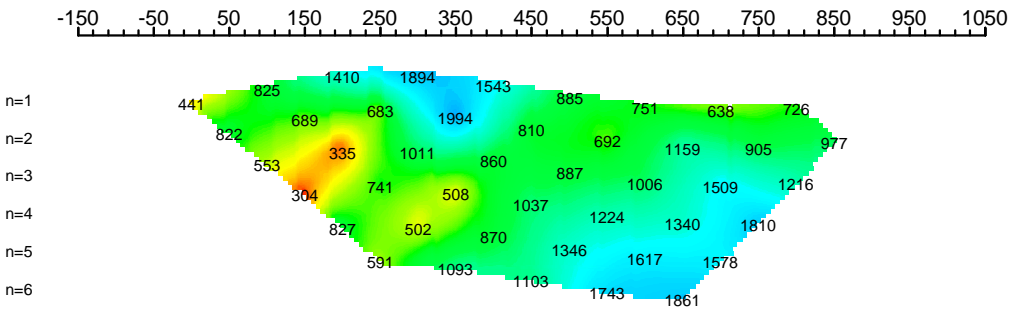
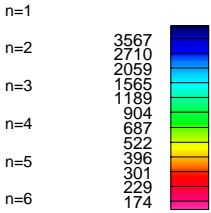


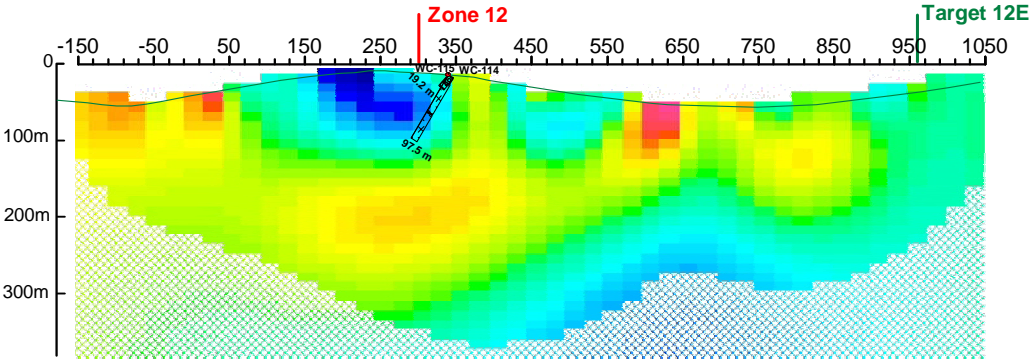
App. Resistivity
Ohm*m



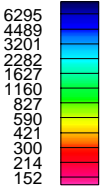
App. Resistivity
Ohm*m



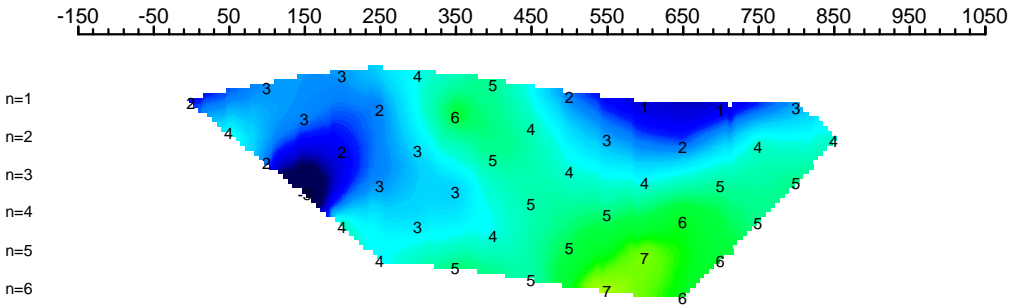
Resistivity Model
Ohm*m



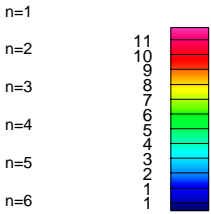
Resistivity Model
Ohm*m



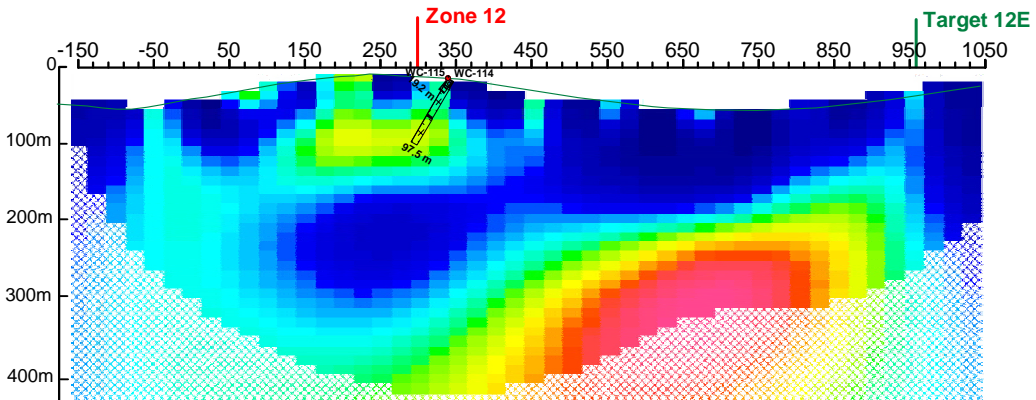
App. Chargeability
mV/V



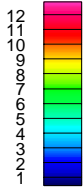
App. Chargeability
mV/V



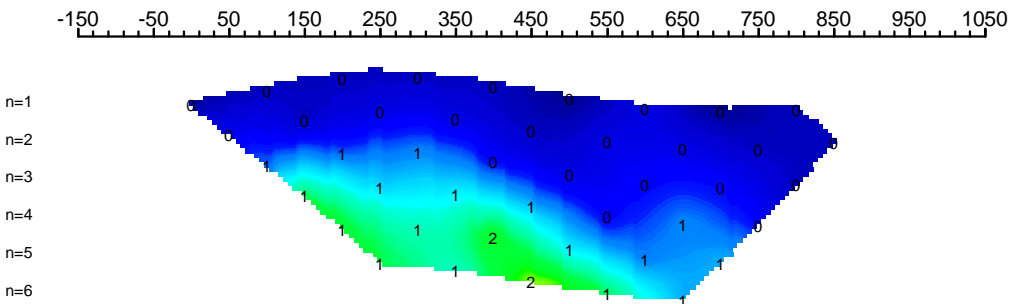
Chargeability Model
mV/V



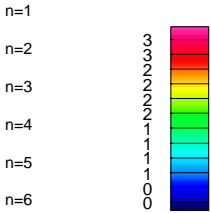
Chargeability Model
mV/V



App. Chg. Error
mV/V

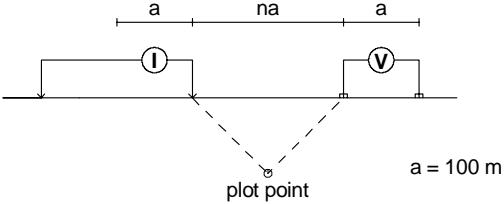


App. Chg. Error
mV/V

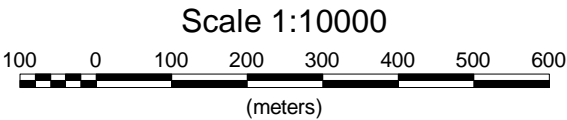
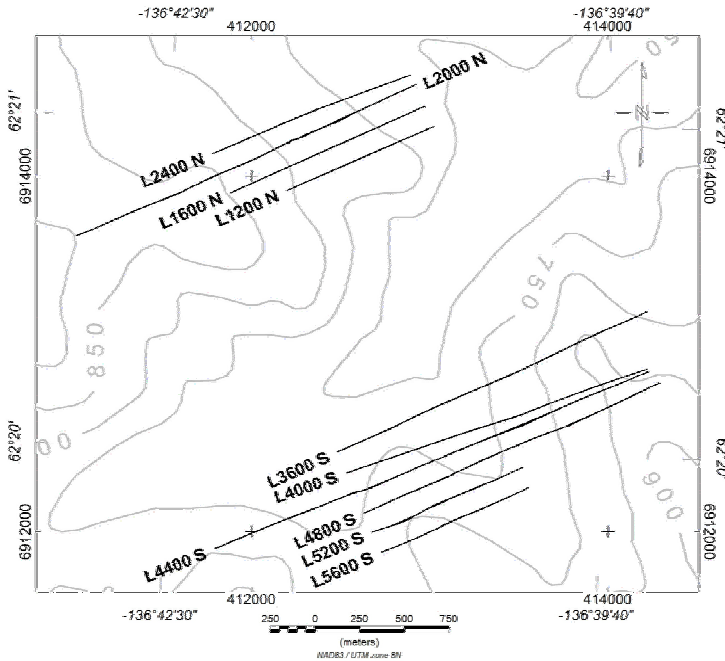


COMPOSITE SECTION PLOT L5200S

Modified Pole-Dipole Array



Stationary electrode at 150W (moving E).
Receiver: Iris ElrecPro
Transmitter: GDD Tx-II 3.6kW
Data File: Line 5200S -100m-final.xyz
Dates Surveyed : Aug 26 - Sept 10, 2007



No Vertical Exaggeration

WESTERN COPPER CORPORATION

INDUCED POLARIZATION SURVEY
CARMACKS COPPER PROJECT
COMPOSITE SECTION L5200S - 100m DIPOLES

Mining District: Whitehorse
NTS: 115 I/07
Job: WRN-7506-YT

Datum: Local Grid
Drawn by: HS
Date: 04 Jan 08

AURORA GEOSCIENCES LTD.